

Procession® Process Repository Object Model

The Procession® Process Repository Object Model is a COM component that forms the basis of the Procession® Process Designer. It is available as a separate component to enable tight integration with other process design tools.

Programmatic access

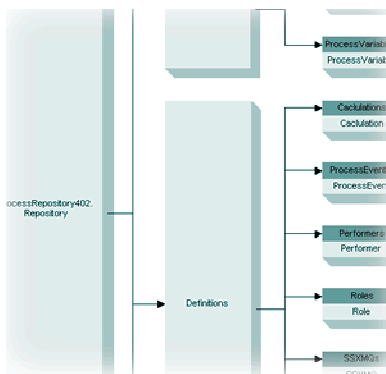
The Procession® Process Repository Object Model provides a comprehensive set of components that allow Process designs to be constructed programmatically, giving the developer full control over the Process Repository whether it be with the intension of automatically creating Process designs, or simply extending the functionality available within the Procession® Process Designer.

COM Architecture

Supplied as a set of COM components, they can not only be used in a wide range of development languages such as Visual Basic, Visual C++ and Delphi but also hundreds of applications that already support Visual Basic for Applications or Visual Basic Scripting.

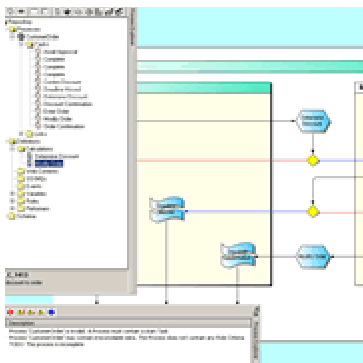
Integrated XML/BPML process definition

XML is core to the Process Repository. Automatic transformation provides version isolation as well as cross Schema support, such as BPML. XML can be accessed at any stage of the Process design, obtaining individual definitions or groups of definitions, or the Process Repository in its entirety. The developer can dictate how the XML is presented and the criteria for inclusion. For example, if there were a large design where only a single definition had been changed, by requesting modified definitions only, only that



BPMI.org

single definition would be output. This not only reduces the amount of XML that needs to be uploaded through the Procession® XML Gateway, but also requires less server resources and further reduces potential conflicts. The resulting XML feed can also be consumed by any Web service or any XML enabled application.

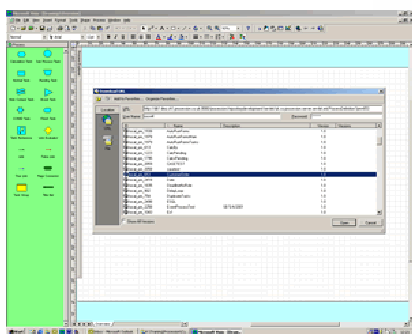


User Interface components Included

Also included is a full set of user interface controls and dialogs, many of which can be used in conjunction or independently of the underlying Process Repository. The existing dialogs can be used 'as is'; the base controls can be incorporated into specialised dialogs; or the developer can simply provide their own dialogs and communicate directly with the Process Repository.

Model-View-Controller best of breed

By allowing direct access to the Process Repository and User Interface components, there are no constraints on how a Process design can be visualised, the developer can create Process designs in any way they choose. This can be anything from a simple set of Wizards with no diagrammatic representation to a full graphical representation in applications such as Visio, Corel Draw, Rational Rose, etc.



Offline operation

All the functionality of the Process Repository is available offline. How much or how little of the Procession® Process is included is completely under the control of the developer. A Process design can be saved as XML to a file and picked up at a later date without ever having access to databases, networks or the Internet.

Inbuilt, multilevel Undo/Redo & change journaling

The Process Repository has full Undo/Redo capabilities built in enabling it to be synchronised with any hosting application by the use of user definable Undo blocks.

Multiple Process sources with fine-grained conflict resolution

Different elements can be added to the Process Repository from a variety of Process sources. Conflict resolution ensures that the Process Repository is always consistent with full control over how conflicts are handled; using the existing elements, overwriting existing elements with the incoming elements, or making duplicates of the incoming elements to ensure potential conflicts are avoided. The Procession® XML Gateway ensures that any elements from external Process sources are automatically added correctly.

Requirements

COM Development environment (VBA, VBScript, VB, VC++)
128Mb RAM minimum
20MB Hard Disk
Windows NT, Windows 2000

For Process deployment

Procession® XML Gateway and Procession® Process Engine

Asheridge Road
Chesham
HP5 2QD
UK
+44 (0) 1494 781 444
<http://www.procession.com/>
sales@procession.com

Procession®
powering the e-process revolution

All rights reserved. Procession® and E-PROCESS SUITE™ are trademarks of Procession Software Limited. All company and product names other than Procession® are acknowledged as trademarks of their respective companies.